

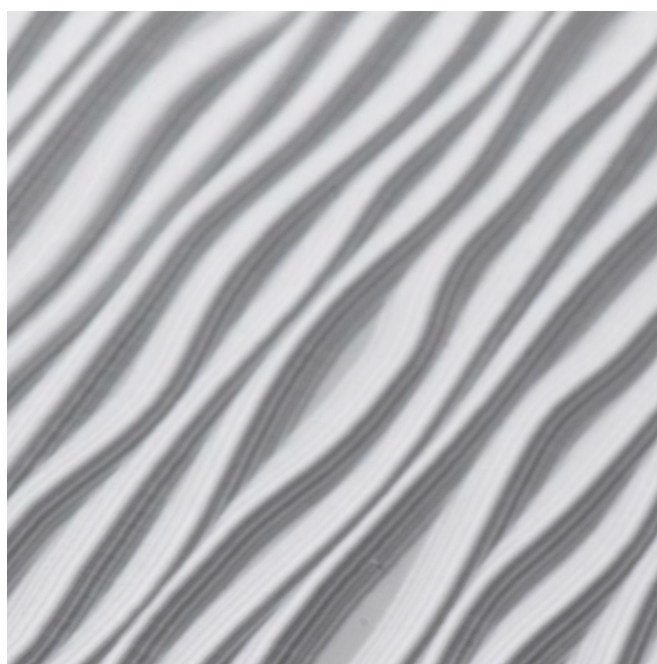
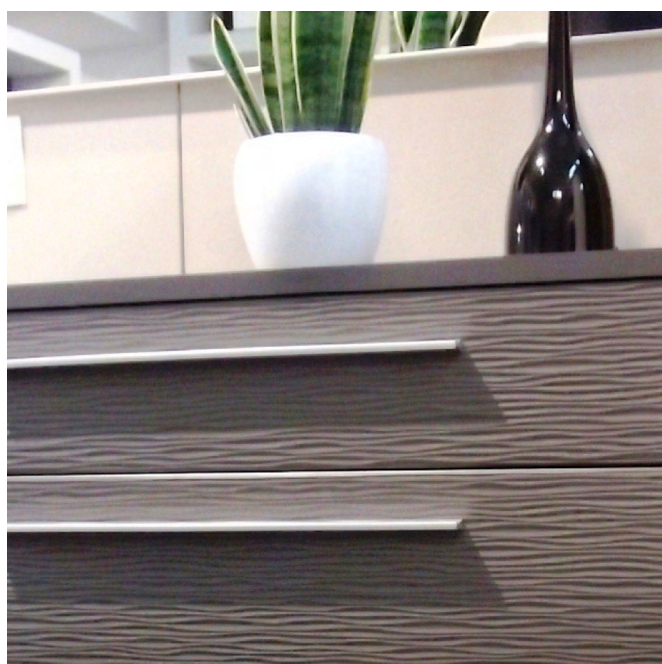


*Rely on it.*

## RENOLIT WOOD-STOCK Oceandrive

### Product and Processing Information

Decorative  
Laminates for  
the design and  
finishing of  
furniture surfaces  
and interior spaces





# CONTENT

PRODUCT .....	4
Material .....	5
Balance Material .....	6
Application & Processing .....	7
Edge Finishing .....	7
Lacquering .....	8
Properties .....	9
Cleaning .....	10
Storage conditions .....	10
Environmental compatibility .....	10
GENERAL CONDITIONS .....	11
Order and Pricing Information .....	11

---



# PRODUCT



## MATERIAL

RENOLIT WOOD-STOCK Oceandrive is suitable for surface lamination of various wood based materials and the postforming process. The product is backed with a non-woven fabric which permits the use of various adhesive systems. For smaller components, PVAc- and EVA-based dispersion adhesives can be used. For larger components non-aqueous adhesive systems are essential, e.g. hotmelt adhesives. The best results are achieved with the use of PUR hotmelt adhesive.

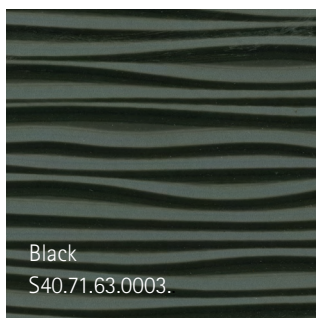
As the RENOLIT WOOD-STOCK material can be easily embossed within a material thickness of 2 mm we can achieve interesting surface structure. The special feature RENOLIT WOOD-STOCK Oceandrive is the unique structure of a deeply embossed surface with tridimensional character.

RENOLIT WOOD-STOCK Oceandrive deep embossed sheets for furniture application and interior decoration are having a special formulation, a square meter weight of 1.760 g (+/- 100 g/m<sup>2</sup>) and a thickness of 2.00 mm.

The emboss is running in cross wise direction.

RENOLIT WOOD-STOCK Oceandrive is available in two alternative surface finishes:

- a) with a duromer lacquer as a finished surface (standard)
- b) with a primer for painting by the customer (recoatable)

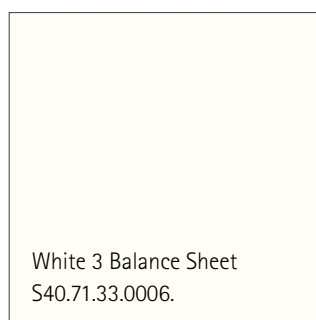


## BALANCE MATERIAL

We highly recommend a suitable balance to avoid bending of board. Our **RENOLIT** balance material consists of a **RENOLIT WOOD-STOCK** sheet with a thickness of 1.4 mm and an area weight of 1600 +/- 100 g/m<sup>2</sup>, covered with a **RENOLIT ALKORCELL PP** film on one side and a non-woven on the other side. Balance Material can be ordered MTO.

Standard Width *	1.300 mm
Maximum Width (MTO)	1.400 mm
Thickness (measured with calipers)	1.4 mm
Weight	1.600 g (+/- 100 g/m <sup>2</sup> )
Standard Length of sheets *	2800 mm
Standard Roll Length *	150 lm
Minimum Order Quantity (stock items)	150 lm
Emboss	Smooth

\* other dimensions available on request (MTO)



## APPLICATION & PROCESSING

RENOLIT WOOD-STOCK Oceandrive is suitable for the surface lamination of a wide range of substrates and can be used in the production of furniture, ceiling & wall panels as well as interior decoration in general.

RENOLIT WOOD-STOCK Oceandrive can be processed like usual laminates and so flat laminated onto various substrates:

- Gypsum plasterboard
- Chipboard
- MDF boards
- Multiplex board
- Plywood

A suitable backing sheet is highly recommended to avoid bending of board (See BALANCE MATERIAL)

RENOLIT WOOD-STOCK Oceandrive is provided with fleece on the reverse side which allows the use of a wide range of glue-systems e.g.

- Dispersion adhesive based on PVAc or EVA
- Hot melt adhesive based on PO or PUR

## EDGE FINISHING

Polyolefin (PO) edging strips are the optimum choice. After edging, a chamfer is machined which ends just below the valleys of the texture (see below). For this, a large-surface scanning element should be used to ensure straight, even machining. The surface quality of the chamfer can be improved by the use of a draw blade. Laser edging-technology is particularly elegant as the adhesive joint is practically invisible. The impression is of a milled solid surface.



## LACQUERING

In the recoatable version, RENOLIT WOOD-STOCK Oceandrive can be lacquered as desired, due to its special surface finish.

For lacquering RENOLIT WOOD-STOCK Oceandrive, we recommend 2K-PUR lacquers as well as acrylate lacquers. The lacquer application can be done by spraying, brushing or rolling. In any case, we recommend contacting the paint supplier. He can present suitable systems and carry out the required tests.

Furthermore, please note:

The surface of RENOLIT WOOD-STOCK Oceandrive is covered with a primer and should therefore not be sanded.

- The surface must be completely free of dust, grease and other residues. Cleaning before painting with mild, residue-free cleaning agent.
- RENOLIT WOOD-STOCK Oceandrive can be sensitive to solvents. Therefore, it should be ruled out that too much lacquer remains on the sheet too long, to minimize negative influences on the sheet e.g. if lacquer remains on the inner profile during full painting





## PROPERTIES

PROPERTY	TEST STANDARD / TEST METHOD	VALUES / TOLERANCES
Thickness	Caliper	approx. 2.00 mm
Total surface weight		1.760 g/m <sup>2</sup> (+/-100 g)
Surface weight, non-woven fabric		40 – 50 g/m <sup>2</sup>
Density	ISO 1183	1.08 – 1.14 g/cm <sup>3</sup>
Chemical resistance	DIN EN 12720, 1997-10 (test substances and exposure times acc. DIN 68861/1, 2001-04)	Lacquered version (a): 1 C
Dimensional change during water immersion	4-day water immersion	longitudinal max. -0.20 % transverse max. 0.20 %
Weight increase during water immersion	24-hour water immersion	Max. 6 g/m <sup>2</sup> / 0.30 %
Longitudinal expansion coefficient	$\Delta t = 50^{\circ} \text{ C } (20^{\circ} \text{ C} - 70^{\circ} \text{ C})$	- longitudinal/transverse max. 0.20 % at 70° C* - after cooling to 20° C longitudinal/ transverse max. -0.30 %*
Light resistance	DIN EN ISO 4892-2, 2006-06, DIN EN ISO 105 B 02, 2002-07	Lacquered version (a): ≥ 5 (blue wool scale)

## CLEANING

- Use mild detergents with no abrasives.
- Do not use abrasives, solvents, polishes, waxes or steam-cleaning equipment.
- To prevent damage to the surface, test compatibility in an unobtrusive place in minimum quantities and with a short detergent effect period. Take into account manufacturer's instructions.

## STORAGE CONDITIONS

- Store in a clean, dry environment at room temperature with moderate humidity.
- The surface material can be stored in its unopened packaging. Avoid contact with heat and sunlight.
- RENOLIT WOOD-STOCK Oceandrive should be acclimatized for 72 hours at room temperature (approx. 20°C).
- Approx. shelf life 12 months

## ENVIRONMENTAL COMPATIBILITY

RENOLIT WOOD-STOCK Oceandrive is a polyolefin-based decorative surface. The formulation is free from halogen compounds or plasticizers. In the production of RENOLIT WOOD-STOCK Oceandrive we preferably use environmentally sustainable pigments.

RENOLIT WOOD-STOCK Oceandrive is in conformity with the REACH directives.

# GENERAL CONDITIONS

## ORDER AND PRICING INFORMATION

Standard Width Maximum Width (MTO) <i>Smaller widths on request (MTO)</i>	1.300 mm / 1.400 mm
Thickness (measured with calipers)	2.0 mm
Weight	1.760 g (+/- 100 g/m2)
Standard Length of sheets Standard Roll Length Short Roll Length	2800 mm 150 lm 30 lm
Minimum Order Quantity (stock items)	One Roll
Emboss	Oceandrive (running in cross wise direction)



Available in the  
RENOLIT Shop.

RENOLIT WOOD-STOCK Oceandrive Short Rolls can be purchased easily via our online shop.  
For more information and purchasing visit: [shop.renolit.com](https://shop.renolit.com)



*Rely on it.*

Business Unit RENOLIT *DESIGN*

**RENOLIT SE**

Horchheimer Str. 50  
67547 Worms | Germany  
Phone: +49.6241.303.1222  
Fax: +49.6241.303.18.1141  
[renolit.com/design](http://renolit.com/design)